



STANDARD FEATURES

- Free standing or wall mounted stainless steel model (white epoxy interior finish)
- 38°F operating temperature
- Rounded corners inside the model
- Heat insulation with ecological polyurethane foam
- Height adjustable intermediate glass shelf
- Removable stainless steel bottom grids
- Double glazed doors "glass" version
- Internal LED lighting system
- Ventilated refrigeration with central evaporator
- Thermostatic valve
- Digital control panel supplied
- Sustaining bars with easy mounting system

REFRIGERATED WALL SHELVING DISPLAY SPECIFICATIONS

MODELS	LENGTHS	DEPTHS	HEIGHT	# OF DOORS	NET WEIGHTS (LBS)	REMOTE BTU'S +35°F	* VOLTAGES	AMPS
VRW1000 A	39 3/8" (1000mm)	19 7/8" (505mm)	88 3/4" (2255mm)	2	320	1100	120	3
VRW1500 A	59 1/16" (1500mm)	19 7/8" (505mm)	88 3/4" (2255mm)	3	420	1470	120	4
VRW1000 B	39 3/8" (1000mm)	17 11/16" (449mm)	32 1/4" (819mm)	2	295	1100	120	3
VRW1500 B	59 1/16" (1500mm)	17 11/16" (449mm)	32 1/4" (819mm)	3	405	1470	120	4

A (INCLUDING WALL PANEL) = 19 7/8"D (505mm) / 88 3/4"H (2255mm) | B (FREE STANDING/WITHOUT WALL PANEL) = 17 11/16"D (750mm) / 32 1/4"H (819mm)

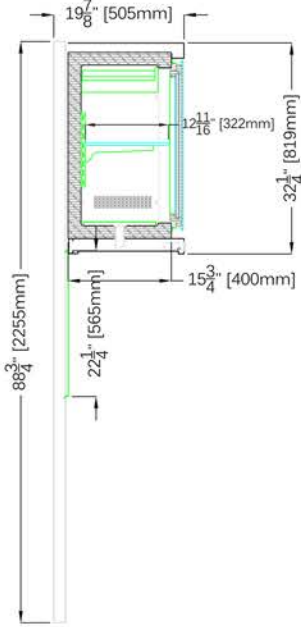
* REMOTE CONDENSING UNIT NOT SUPPLIED

RWS SERIES BACK WALLS

REFRIGERATED WALL SHELVING DISPLAY

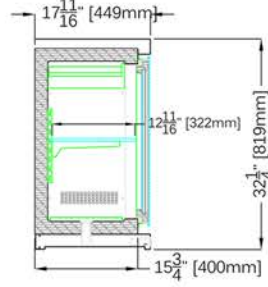
**A - 19 7/8" D (505MM)
88 3/4" H (2255MM)**

VETRINA WITH WALL PANEL



**B - 17 11/16" D (449MM)
32 1/4" H (819MM)**

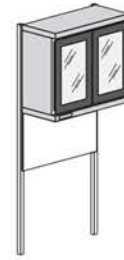
VETRINA WITHOUT WALL PANEL



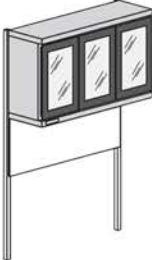
VETRINA WITH WALL PANEL



VRW1000



VRW1500

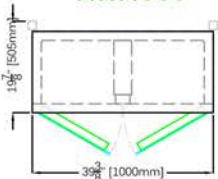


VETRINA WITHOUT WALL PANEL

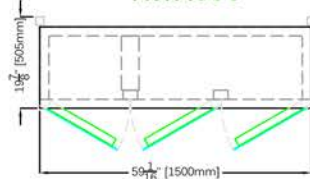


PLAN VIEWS

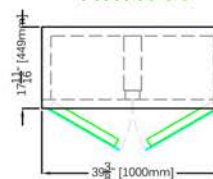
VRW1000



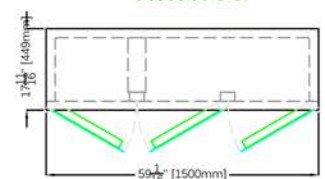
VRW1500



VRW1000



VRW1500

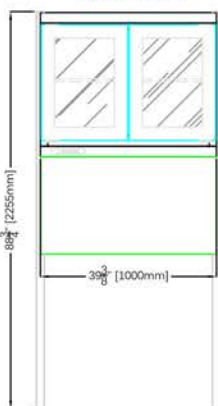


**A - 19 7/8" D (505MM) / 88 3/4" H (2255MM)
VETRINA WITH WALL PANEL**

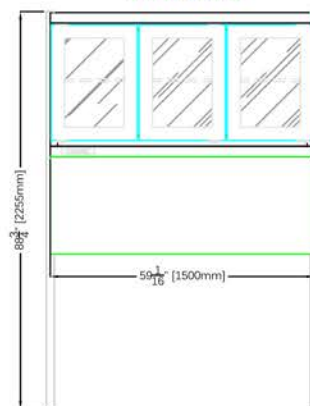
**B - 17 11/16" D (449MM) / 32 1/4" H (819MM)
VETRINA WITHOUT WALL PANEL**

REAR ELEVATIONS (OPERATOR SIDE)

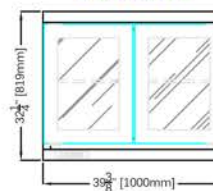
VRW1000



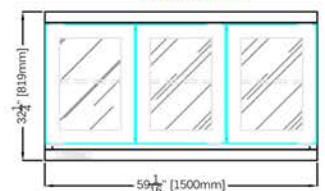
VRW1500



VRW1000



VRW1500



**B - 17 11/16" D (449MM) / 32 1/4" H (819MM)
VETRINA WITHOUT WALL PANEL**

**A - 19 7/8" D (505MM) / 88 3/4" H (2255MM)
VETRINA WITH WALL PANEL**



361-367 Beach Road, Burlingame, CA 94010
Tel: 855.885.2400 | 650.342.2400 | Fax: 650.342.7400
sales@oscartek.com | www.oscartek.com

